

Parts List

Tech Labels & Wiring Diagrams

Models

PGF036H080D	GPFM36H080D
PGF036H100D	GPFM36H100D
PGF048H080D	GPFM48H080D
PGF048H120D	GPFM48H120D
PGF060H100D	GPFM60H100D
PGF060H140D	GPFM60H140D
PGF036L080D	GPFM36L080D
PGF036L100D	GPFM36L100D
PGF048L080D	GPFM48L080D
PGF048L120D	GPFM48L120D
PGF060L100D	GPFM60L100D
PGF060L140D	GPFM60L140D
PGF060S140D	GPFM60S140D

Three Phase Package Gas-Electric Combination Units

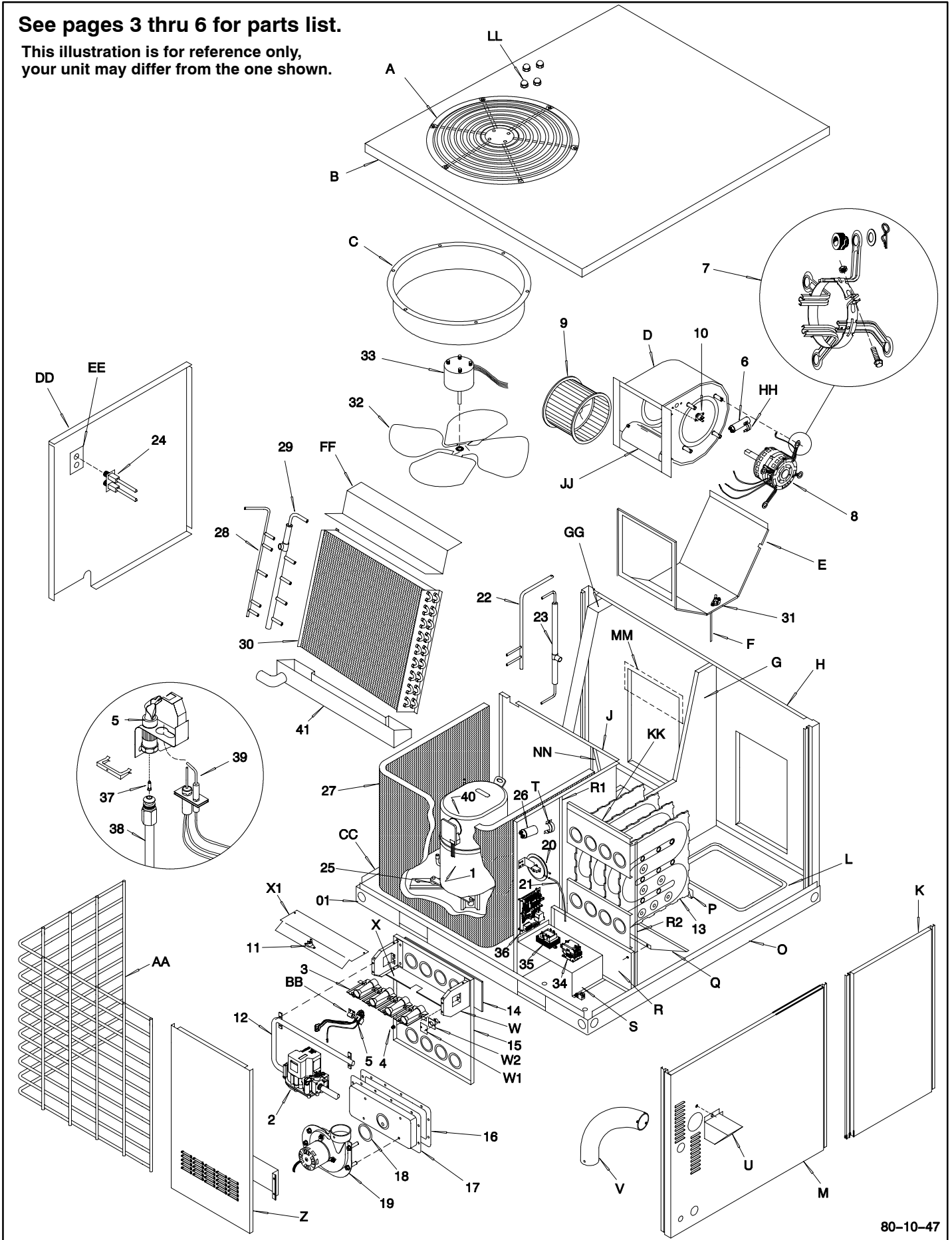
Manufactured by:
International Comfort Products
Lewisburg, TN USA 37091

Save This Manual For Future Reference

509 04 1704 00
2-14-02 LP-1

See pages 3 thru 6 for parts list.

**This illustration is for reference only,
your unit may differ from the one shown.**



Models: PGF036H080D, PGF036H100D, PGF048H080D, PGF048H120D, PGF060H100D, PGF060H140D, PGF036L080D, PGF036L100D, PGF048L080D, PGF048L120D, GPFM36H080D, GPFM36H100D, GPFM48H080D, GPFM48H12D, GPFM60H100D, GPFM60H140D, GPFM36L080D, GPFM36L100D, GPFM48L080D, GPFM48L120D

NO	DESCRIPTION	Part No	UNIT SIZE, VOLTAGE, AND HEAT							
			36H 080	36L 080	36H 100	36L 100	48H 080	48L 080	48H 120	48L 120
1	Compressor, CR38K6TF5		1		1					
1	CR38K6TFD		*	1		1				
1	CR42K6TF5		*	*	*	*	1		1	
1	CR42K6TFD		*	*	*	*	*	1		1
1	SRY582AC01		*	*	*	*	*	*	*	*
1	SRH582AC01		*	*	*	*	*	*	*	*
1	SRJ582AC01		*	*	*	*	*	*	*	*
2	Valve, Gas (Nat. & L.P.)	1011024	1	1	1	1	1	1	1	1
3	Burner Assembly	1008725	1	1	1	1	1	1		
3		1008726	*	*	*	*	*	*	1	1
3		1009179	*	*	*	*	*	*	*	*
4	Orifice, Burner Nat. Gas (No. 45)	1011353	4	4			4	4		
4	Nat. Gas (No. 42)	1011351	*	*	4	4			5	5
4	L.P. Gas (No. 56)	1011355	4	4			4	4		
4	L.P. Gas (No. 54)	1011376	*	*	4	4			5	5
5	Burner, Pilot/Ign/Sen (Nat. & L.P.)	1149856	1	1	1	1	1	1	1	1
6	Capacitor, 15Mfd.,370Volt	1094959	1	1	1	1	1	1	1	1
6	20Mfd.,440Volt	1094968	*	*	*	*	*	*	*	*
7	Mount, Blower Motor Kit	1002804	1	1	1	1	1	1	1	1
8	Motor, Blower, 1/2Hp, 230 Volt	1065279	1		1		1		1	
8	1Hp, 230 Volt	1054586	*	*	*	*	*	*	*	*
8	1/2Hp, 460 Volt	1085643	*	1		1		1		
8	1Hp, 460 Volt	1085645	*	*	*	*	*	*	*	1
8	1Hp, 575 Volt	1098971	*	*	*	*	*	*	*	
9	Wheel, Blower 11-9DD	1065361	1	1	1	1	1	1		
9	11-11DD	1054593	*	*	*	*	*	*	1	1
10	Switch, Limit (Auxiliary) 130	1000735	1	1	1	1	1	1	1	1
11	Switch, Limit (Rollout) 300F	1005549	1	1	1	1	1	1	1	1
12	Manifold, Gas	1084114	1	1	1	1	1	1		
12		1084115	*	*	*	*	*	*	1	1
12		1084116	*	*	*	*	*	*	*	*
13	Heat Exchanger, 4-Section	1008878	1	1	1	1	1	1		
13	Heat Exchanger, 5-Section	1008879	*	*	*	*	*	*	1	1
13	Heat Exchanger, 6-Section	231010106	*	*	*	*	*	*	*	*
14	Gasket, Heat Exchanger	2480906	2	2	2	2	2	2		
14		2480907	*	*	*	*	*	*	2	2
14		2480908	*	*	*	*	*	*	*	*
15	Partition, Heat Exchanger Front	1008071	1	1	1	1	1	1		
15		1008073	*	*	*	*	*	*	1	1
15		1008074	*	*	*	*	*	*	*	*
16	Gasket, Collector Box	1093662	1	1	1	1	1	1		
16		1093663	*	*	*	*	*	*	1	1
17	Box, Collector	1085401	1	1			1	1		
17		1085402	*	*	1	1				
17		1084213	*	*	*	*	*	*	1	1
17		1011057	*	*	*	*	*	*	*	*
18	Gasket, Blower	1110691	1	1	1	1	1	1	1	1
19	Blower, Exhaust	1110008	1	1	1	1	1	1	1	1
20	Switch, Vent Pressure	1085570	1	1	1	1	1	1	1	1
21	Tube, Sensor	610290	1	1	1	1	1	1	1	1

NO	DESCRIPTION	Part No	UNIT SIZE, VOLTAGE, AND HEAT							
			36H 080	36L 080	36H 100	36L 100	48H 080	48L 080	48H 120	48L 120
22	Manifold, Condenser (Discharge)	1097655	1	1	1	1				
22		1087654	*	*	*	*	1	1	1	1
23	Manifold, Condenser (Liquid)	1085462	*	*	*	*	1	1	1	1
23		1085554	*	*	*	*	*	*	*	*
24	Port Valve Assembly	1085494	1	1	1	1	1	1	1	1
25	Grommet, Compressor Mtg.	1053188	4	4	4	4	4	4	4	4
25		1052060	*	*	*	*	*	*	*	*
26	Capacitor, 5Mfd.,370Volt	1094954	1	1	1	1	1	1	1	1
27	Coil, Condenser	1085551	1	1	1	1				
27		1085553	*	*	*	*	1	1	1	1
27		1085552	*	*	*	*	*	*	*	*
28	Manifold, Evaporator (Liquid)	1085445	1	1	1	1				
28		1085446	*	*	*	*	1	1	1	1
28		1085559	*	*	*	*	*	*	*	*
29	Manifold, Evaporator (Suction)	1085451	1	1	1	1				
29		1085452	*	*	*	*	1	1	1	1
29		1085560	*	*	*	*	*	*	*	*
30	Coil, Evaporator	1085427	1	1	1	1				
30		1085428	*	*	*	*	1	1	1	1
30		1085556	*	*	*	*	*	*	*	*
31	Switch, Limit (Blower Deck) 160F	34335000	1	1	1	1	1	1	1	1
32	Fan, Condenser	1096902	1	1	1	1	1	1	1	1
33	Motor, Cond. Fan 1/3 Hp, 230 Volt	1082642	1		1		1		1	
33	1/3 Hp, 460 Volt	1069783	*	1		1		1		1
33	1/3 Hp, 575 Volt	1069783	*							
34	Contactoer 30 Amp., 3 Pole	607339	1	1	1	1	1	1	1	1
35	Transformer, 230V Pri, 24V Sec., 65VA	1054637	1		1		1		1	
35	460/575V Pri, 24V Sec., 65VA	1054638	*	1		1		1		1
36	Timer, Fan	1084197	1	1	1	1	1	1	1	1
37	Orifice, Pilot Burner (Nat. Gas) .020	1160403	1	1	1	1	1	1	1	1
37	(L.P. Gas) .011	1009136	1	1	1	1	1	1	1	1
38	Tube, Pilot	64930	1	1	1	1	1	1	1	1
39	Ignitor & Sensor	1009524	1	1	1	1	1	1	1	1
40	Plug, Compressor Harness	1096953	1	1	1	1	1	1	1	1
40		1114045	*	*	*	*	*	*	*	*
41	Pan, Drain	1098037	1	1	1	1	1	1	1	1
42	Filter, 16 X 25 X 1	1098022	2	2	2	2	2	2	2	2
43	Transformer, 460V Pri, 230V Sec., 110VA	1054639	*	1		1		1		1
44	Relay, DPDT	1097980	*	1		1		1		1
)	Gas Conversion Kit (Nat. to L.P.)	1097389	1	1			1	1		
)	Gas Conversion Kit (Nat. to L.P.)	1160991	*	*	1	1			1	1
)	Gas Conversion Kit (L.P. to Nat.)									
)	Manual, Parts List	509041703	1	1	1	1	1	1	1	1
)	Manual, Installation	509011101	1	1	1	1	1	1	1	1

NO	DESCRIPTION	Part No	UNIT SIZE, VOLTAGE, AND HEAT							
			36H 080	36L 080	36H 100	36L 100	48H 080	48L 080	48H 120	48L 120
A	Grille, Outlet	1084490	1	1	1	1	1	1	1	1
AA	Grille, Inlet	1084268	1	1	1	1	1	1	1	1
B	Panel, Top	1084141	1	1	1	1	1	1	1	1
BB	Bracket, Pilot	1010901	1	1	1	1	1	1	1	1
C	Orifice, Condenser Fan	1065724	1	1	1	1	1	1	1	1
CC	Panel, Base	1097698	1	1	1	1	1	1	1	1
D	Housing, Blower	1066454	1	1	1	1	1	1		
D		1085636	*	*	*	*	*	*	1	1
DD	Panel, Compressor Access	1084168	1	1	1	1	1	1	1	1
E	Deck, Blower	1084122	1	1	1	1	1	1	1	1
EE	Plate, Pressure Port	1085473	1	1	1	1	1	1	1	1
F	Brace, Blower Deck	1085634	1	1	1	1	1	1	1	1
G	Panel, Coil Support	1084165	1	1	1	1	1	1	1	1
GG	Plate, Evap Drip	1096955	1	1	1	1	1	1	1	1
H	Panel, Rear	1096956	1	1	1	1	1	1	1	1
HH	Clamp, Capacitor	1095020	1	1	1	1	1	1	1	1
HH		1095022	*	*	*	*	*	*	*	*
J	Panel, Center	1097662	1	1	1	1	1	1	1	1
JJ	Panel, Blower Cutoff	1096900	1		1		1			
JJ		1066448	*	1		1		1		
JJ		1096901	*	*	*	*	*	*	1	1
JJ		1065073	*	*	*	*	*	*	*	*
K	Panel, Blower Access	1084152	1	1	1	1	1	1	1	1
KK	Panel, Heat Exchanger Filler	1084223	1	1	1	1	1	1	1	1
L	Cover, Duct	1096918	2	2	2	2	2	2	2	2
LL	Nut, Cap	1067902	4	4	4	4	4	4	4	4
M	Post, Corner (Heating)	1084108	1	1	1	1	1	1	1	1
MM	Panel, Rear Filler	1096960	1	1	1	1	1	1	1	1
NN	Bracket, Condenser	1096936	*	*	*	*	1	1	1	1
NN		1096945	1	1	1	1	*	*	*	*
O	Rail, Base (Front & Rear)	1084159	2	2	2	2	2	2	2	2
O1	Rail, Base (End)	1084102	2	2	2	2	2	2	2	2
O2	Rail, Base (Center)	1096996	1	1	1	1	1	1	1	1
P	Support, Heat Exchanger Rear	1084217	1	1	1	1	1	1	1	1
PP	Bracket, Filter Side	1097531	1	1	1	1	1	1	1	1
Q	Brace, Heat Exchanger Support	1084161	1	1	1	1	1	1	1	1
QQ	Bracket, Filter Bottom	1097532	1	1	1	1	1	1	1	1
R	Support, Heat Exchanger	1084111	1	1	1	1	1	1	1	1
R1	Angle, Vertical (Left)	1084117	1	1	1	1	1	1	1	1
R2	Angle, Vertical (Right)	1085644	1	1	1	1	1	1	1	1
RR	Bracket, Filter Side	1097533	1	1	1	1	1	1	1	1
S	Bracket, Component Mounting	1084224	1	1	1	1	1	1	1	1
SS	Rod, Flue Vent	1096969	1	1	1	1	1	1	1	1
T	Clamp, Capacitor	1095020	1	1	1	1	1	1	1	1
U	Cover, Vent	1096970	1	1	1	1	1	1	1	1
V	Elbow, Exhaust Blower 90	1084138	1	1	1	1	1	1	1	1
W	Bracket, Manifold Support	1011417	2	2	2	2	2	2	2	2
W1	Plate, Limit Hole	1084271	1	1	1	1	1	1	1	1
W2	Gasket, Limit Plate	1085646	1	1	1	1	1	1	1	1

NO	DESCRIPTION	Part No	UNIT SIZE, VOLTAGE, AND HEAT							
			36H 080	36L 080	36H 100	36L 100	48H 080	48L 080	48H 120	48L 120
X	Shield, Burner Bottom	1084203	1	1	1	1	1	1		
X		1084205	*	*	*	*	*	*	1	1
X		1084207	*	*	*	*	*	*	*	*
X1	Shield, Burner Top	1084202	1	1	1	1	1	1		
X1		1084204	*	*	*	*	*	*	1	1
X1		1084206	*	*	*	*	*	*	*	*
Z	Panel, Access Heating	1084150	1	1	1	1	1	1	1	1

Models: PGF060H100D, PGF060L100D, PGF060L100D, PGF060H140D, PGF060L140D, PGF060L140D, PGF060L140D, PGF060S140D
 GPFM60H100D, GPFM60L100D, GPFM60L100D, GPFM60H140D, GPFM60L140D, GPFM60L140D, GPFM60L140D, GPFM60S140D

KEY NO.	DESCRIPTION	PART NUMBER	PGF060H100D	PGF060L100D	PGF060L100D	PGF060H140D	PGF060L140D	PGF060L140D	PGF060S140D
			GPFM60H100D	GPFM60L100D	GPFM60L100D	GPFM60H140D	GPFM60L140D	GPFM60L140D	GPFM60S140D
1	Compressor, With pulg connection.	SRY582AC01	1			1			
1		SRH582AC01	*		1			1	
1		SRJ582AC01	*		*	*		*	1
2	Valve, Gas, Nat.	1011421	1	1	1	1	1	1	1
3	Burner Assembly	1008725	1	1	1				
3		1009179	*	*	*	1	1	1	1
4	Orifice, Burner Nat. Gas (No. 42)	1011351	4	4	4	6	6	6	6
5	Burner, Pilot/Ign/Sen Nat.	1008731	1	1	1	1	1	1	1
6	Capacitor, 20Mfd.,440Volt	1094968	1	1	1	1	1	1	
6	Capacitor, 15Mfd.,370Volt	1094959	*		*	*		*	1
7	Mount, Blower Motor Kit	1002804	1	1		1	1		
7		1097955	*		1			1	1
8	Motor, Blower 1Hp, 230 Volt	1054586	1	1		1	1		
8	1Hp, 460 Volt	1098023	*		1			1	
8	1Hp, 575 Volt	1098971	*		*	*		*	1
9	Wheel, Blower 12-12DD	1098091	1		1	1		1	1
10	Switch, Limit (Auxiliary) 130	1000735	1	1	1	1	1	1	1
11	Switch, Limit (Rollout) 300F	1005549	1	1	1	1	1	1	1
12	Manifold, Gas	1084114	1	1	1				
12		1084116	*	*	*	1	1	1	1
13	Heat Exchanger, 4-Section	1008878	1	1	1				
13	Heat Exchanger, 6-Section	1099556	*	*	*	1	1	1	1
14	Gasket, Heat Exchanger	2480906	2	2	2				
14		2480908	*	*	*	2	2	2	2
15	Partition, Heat Exchanger Front	1008071	1	1	1				
15		1008074	*	*	*	1	1	1	1
16	Gasket, Collector Box	1093662	1	1	1				
16		1093663	*		*	1	1	1	1
17	Box, Collector	1085402	1	1	1				
17		1011057	*	*	*	1	1	1	1
18	Gasket, Blower	1110691	1	1	1	1	1	1	1
19	Blower, Exhaust	1110008	1	1	1	1	1	1	1
20	Switch, Vent Pressure	1085570	1	1	1	1	1	1	1
21	Tube, Sensor	610290	1	1	1	1	1	1	1
22	Manifold, Included with Coil Assembly								
23	Manifold, Included with Coil Assembly								
24	Port Valve Assembly	1098058	1	1	1	1	1	1	1
26	Capacitor, 5Mfd.,370Volt	1094954	1	1	1	1	1	1	1
27	Coil, Condenser	1085552	1	1	1	1	1	1	1
28	Manifold, Included with Coil Assembly								
29	Manifold, Included with Coil Assembly								
30	Coil, Evaporator	1085556	1	1	1	1	1	1	1
31	Switch, Limit (Blower Deck) 160F	34335000	1	1	1	1	1	1	1
32	Fan, Condenser	1096902	1	1	1	1	1	1	1
33	Motor, Condenser Fan 1/3 Hp, 230 Volt	1085926	1			1			
33	1/3 Hp, 460 Volt	1098088	*	1	1		1	1	
33	1/3 Hp, 575 Volt	1098085	*		*	*		*	1

Models: PGF060H100D, PGF060L100D, PGF060L100D, PGF060H140D, PGF060L140D, PGF060L140D, PGF060L140D, PGF060S140D
 GPFM60H100D, GPFM60L100D, GPFM60L100D, GPFM60H140D, GPFM60L140D, GPFM60L140D, GPFM60L140D, GPFM60S140D

KEY NO.	DESCRIPTION	PART NUMBER	PGF060H100D	PGF060L100D	PGF060L100D	PGF060L100D	PGF060H140D	PGF060L140D	PGF060L140D	PGF060S140D
			GPFM60H100D	GPFM60L100D	GPFM60L100D	GPFM60L100D	GPFM60H140D	GPFM60L140D	GPFM60L140D	GPFM60S140D
34	Contactora 30 Amp., 3 Pole	607339	1	1	1	1	1	1	1	1
35	Transformer, 230V Pri, 24V Sec., 65VA	1054637	1				1			
35	460V Pri, 24V Sec., 65VA	1054638		1	1			1	1	1
36	Timer, Fan	1084197	1	1	1	1	1	1	1	1
37	Orifice, Pilot Burner (Nat. Gas) .018	503211	1	1	1	1	1	1	1	1
38	Tube, Pilot	64930	1	1	1	1	1	1	1	1
39	Ignitor & Sensor	1009524	1	1	1	1	1	1	1	1
40	Plug, Compressor Harness	1114024	1				1			
40		1114045	*	1	1			1	1	1
41	Pan, Drain	1098037	1	1	1	1	1	1	1	1
42	Filter, 14 X 25 X 1	1098022	2	2	2	2	2	2	2	2
43	Transformer, 460V Pri, 230V Sec., 110VA	1054639	*	1	1			1	1	1
44	Relay, DPDT	1097980	*	1	1			1	1	1
A	Grille, Outlet	1084490	1	1	1	1	1	1	1	1
AA	Grille, Inlet	1084268	1	1	1	1	1	1	1	1
B	Panel, Top	1084141	1	1	1	1	1	1	1	1
BB	Bracket, Pilot	1010901	1	1	1	1	1	1	1	1
C	Orifice, Condenser Fan	1065724	1	1	1	1	1	1	1	1
D	Housing, Blower	1099244	1	1	1	1			1	1
DD	Panel, Compressor Access	1098764	1	1	1	1	1	1	1	1
H	Panel, Rear	1096956	1	1	1	1	1	1	1	1
JJ	Panel, Blower Cutoff	1098556	1	*	1	1	1	1	1	1
K	Panel, Blower Access	1098766	1	1	1	1	1	1	1	1
LL	Nut, Cap	1067902	4	4	4	4	4	4	4	4
M	Post, Corner (Heating)	1098760	1	1	1	1	1	1	1	1
O	Rail, Base (Front & Rear)	1098869	2	2	2	2	2	2	2	2
O1	Rail, Base (End)	1098870	2	2	2	2	2	2	2	2
OO	Baffle, Nox	1009876	4		4	6			6	6
SS	Rod, Flue Vent	1096969	1	1	1	1	1	1	1	1
U	Cover, Vent	1096970	1	1	1	1	1	1	1	1
V	Elbow, Exhaust Blower 90	1084138	1	1	1	1	1	1	1	1
W	Bracket, Manifold Support	1011820	2	2	2	2	2	2	2	2
X	Shield, Burner Bottom	1084203	1	1	1					
X		1084207	*	*	*	1	1	1	1	1
X1	Shield, Burner Top	1084202	1	1	1					
X1		1084206	*	*	*	1	1	1	1	1
Z	Panel, Access Heating	1084150	1	1	1	1	1	1	1	1
)(Guard ,Cond. Coil, Mesh	1113503	1		1	1			1	1
)(Cover, Duct	1096918	2		2	2			2	2
)(Gas Conversion Kit (Nat. to L.P.)	1160991	1	1	1	1	1	1	1	1
)(Gas Conversion Kit (L.P. to Nat.)	1098575	1		1	1			1	1
)(Manual, Parts List	50904170400	1	1	1	1	1	1	1	1
)(Manual, Installation	50901150100	1	1	1	1	1	1	1	1

Technical Labels

Style No:		PGF036H080/ GPFM36H080 (LOW HEAT)				Outdoor Ambient Temperature - Degrees F. Dry Bulb																								
		208 / 230		Gas Type	NAT	75					85					95					105					115				
				Std Input	80	Entering Indoor Temperature - Degrees F. Wet Bulb																								
				Low Fire Input	IDB	59	63	67	71	59	63	67	71	59	63	67	71	59	63	67	71	59	63	67	71					
Voltage	208 / 230																													
Phase	3																													
Ampacity	20																													
Delay Fuse	15																													
Max. Fuse	30																													
Compressor	COPELAND																													
RLA	11.21																													
LRA	85																													
Cap MFD/V																														
CC Heater																														
Start Kit	NAMA001SC																													
Cond & Evap	Cond	Evap																												
Type	Fan	Blower																												
Size	20.3	DD11-9A																												
Motor-HP	1/3	1/2																												
Type	PSC	PSC																												
FLA	1.9	4.1																												
LRA	3.8	7.5																												
RPM	1140	1000																												
Cap MFD/V	5/440	15/370																												
PTCR																														
Hi Press																														
Low Press																														
Operating Chg (No Lines)*	(R-22 Oz)																													
Service Driers																														
Liquid/Chg	16 Cu In / 11 oz																													
Suction	30 Sq In																													
Unit Weight	410																													

Style No:		PGF036H100 / GPFM36H100 (HIGH HEAT)				Outdoor Ambient Temperature - Degrees F. Dry Bulb																								
		208 / 230		Gas Type	NAT	75					85					95					105					115				
				Std Input	100	Entering Indoor Temperature - Degrees F. Wet Bulb																								
				Low Fire Input	-	59	63	67	71	59	63	67	71	59	63	67	71	59	63	67	71	59	63	67	71					
Voltage	208 / 230																													
Phase	3																													
Ampacity	20																													
Delay Fuse	15																													
Max. Fuse	30																													
Compressor	COPELAND																													
RLA	11.21																													
LRA	85																													
Cap MFD/V																														
CC Heater																														
Start Kit	NAMA001SC																													
Cond & Evap	Cond	Evap																												
Type	Fan	Blower																												
Size	20.3	DD11-9A																												
Motor-HP	1/3	1/2																												
Type	PSC	PSC																												
FLA	1.9	4.1																												
LRA	3.8	7.5																												
RPM	1140	1000																												
Cap MFD/V	5/440	15/370																												
PTCR																														
Hi Press																														
Low Press																														
Operating Chg (No Lines)*	(R-22 Oz)																													
Service Driers																														
Liquid/Chg	16 Cu In / 11 oz																													
Suction	30 Sq In																													
Unit Weight	420																													

Technical Labels

Style No: PGF036L080 / GPFM36L080 (LOW HEAT)			Outdoor Ambient Temperature - Degrees F. Dry Bulb																							
			75				85				95				105				115							
			Entering Indoor Temperature - Degrees F. Wet Bulb																							
			59 63 67 71				59 63 67 71				59 63 67 71				59 63 67 71				59 63 67 71							
Voltage	460	Gas Type	NAT																							
Phase	3	Std Input	80																							
Ampacity	9.6	Low Fire Input	IDB																							
Delay Fuse	15	Std Output	64																							
Max. Fuse	15	Low Fire Output																								
Compressor	COPELAND	Gas Valve (HSP)	HW	70	MBh	36.8	38.1	41.8	-	35.9	37.2	40.8	-	35.0	36.3	39.8	-	33.3	34.5	37.8	-	30.8	32.0	35.0	-	
		Regulation	SNAP		S/T	0.74	0.62	0.43	-	0.76	0.64	0.44	-	0.79	0.66	0.46	-	0.82	0.68	0.47	-	0.82	0.69	0.48	-	
		Manifold Press	3.5		AMPS	18.2	18.5	19.0	-	19.4	19.8	20.4	-	20.5	21.0	21.6	-	21.7	22.1	22.7	-	22.7	23.2	23.9	-	
		Std orifice	45		HI PR	186	201	212	-	212	228	241	-	241	260	274	-	272	292	309	-	300	323	341	-	
Cap MFD/V	42	Low Fire Orifice		80	LO PR	65	69	75	-	67	72	78	-	71	75	82	-	74	79	86	-	77	82	89	-	
CC Heater		Pilot Orifice	0.1228	75	MBh	37.4	38.5	41.7	44.8	36.5	37.6	40.7	43.7	35.6	36.7	39.7	42.6	33.9	34.9	37.7	40.5	31.4	32.3	35.0	37.5	
Start Kit	NAMA001SC	Temp Rise	35 - 65		S/T	0.85	0.76	0.57	0.37	0.87	0.78	0.59	0.38	0.90	0.80	0.61	0.39	0.93	0.83	0.63	0.40	0.94	0.84	0.63	0.41	
		Ignition Type	HSP		AMPS	18.3	18.7	19.2	19.7	19.6	20.0	20.5	21.2	20.7	21.1	21.7	22.4	21.8	22.3	22.9	23.7	22.9	23.4	24.1	24.9	
		Fan On/Off	TIME		HI PR	188	203	214	223	214	230	243	254	244	263	277	289	274	295	312	325	303	326	345	359	
		Limit Set Max	160		LO PR	66	70	76	81	68	73	79	84	72	76	83	89	75	80	87	93	78	83	90	96	
Motor-HP	1/3	Heat Antic	0.58	80	MBh	38.1	38.9	41.6	44.4	37.2	38.0	40.6	43.4	36.3	37.1	39.6	42.3	34.5	35.2	37.6	40.2	31.9	32.6	34.8	37.3	
FLA	0.75				S/T	0.93	0.87	0.71	0.53	0.95	0.89	0.73	0.54	0.98	0.92	0.75	0.56	1.00	0.96	0.78	0.58	1.00	0.96	0.78	0.59	
LRA	2.15				AMPS	18.4	18.8	19.3	19.9	19.7	20.1	20.7	21.4	20.9	21.3	21.9	22.6	22.0	22.5	23.1	23.9	23.1	23.6	24.3	25.1	
RPM	1140				HI PR	190	205	216	225	216	233	246	256	246	265	280	292	277	298	315	329	306	330	348	363	
Cap MFD/V	5/440				LO PR	66	70	77	82	69	73	80	85	72	77	84	89	76	81	88	94	78	83	91	97	
PTCR					85	MBh	38.8	39.5	41.4	44.1	37.8	38.6	40.4	43.1	36.9	37.6	39.4	42.0	35.1	35.7	37.4	39.9	32.5	33.1	34.7	37.0
						S/T	0.97	0.94	0.85	0.69	1.00	0.96	0.87	0.71	1.00	0.99	0.90	0.73	1.00	1.00	0.93	0.76	1.00	1.00	0.94	0.76
						AMPS	18.6	18.9	19.4	20.1	19.9	20.3	20.9	21.5	21.0	21.5	22.1	22.8	22.2	22.6	23.3	24.1	23.3	23.8	24.5	25.3
						HI PR	192	207	218	228	219	235	248	259	249	268	283	295	280	301	318	332	309	333	352	367
Hi Press					LO PR	67	71	78	83	70	74	81	86	73	78	85	90	77	81	89	95	79	84	92	98	
Low Press					Air Delivery in CFM - Dry Coil - No Filter (Add .05 static for Wet Coil)																					
Operating Chg	(R-22 Oz)				230 Volt	External Static Press (Inch Water Column)																				
(No Lines)*	80				Speed Tap	0.2	0.3	0.4	0.5																	
Service Driers					HI	1770	1740	1710	1670																	
Liquid/Chg	16 Cu In / 11 oz				MD	1385	1365	1355	1340																	
Suction	30 Sq In				LO	1180	1170	1160	1180																	
Unit Weight	410				1098006																					

Style No: PGF036L100 / GPFM36L100 (HIGH HEAT)			Outdoor Ambient Temperature - Degrees F. Dry Bulb																							
			75				85				95				105				115							
			Entering Indoor Temperature - Degrees F. Wet Bulb																							
			59 63 67 71				59 63 67 71				59 63 67 71				59 63 67 71				59 63 67 71							
Voltage	460	Gas Type	NAT																							
Phase	3	Std Input	100																							
Ampacity	9.6	Low Fire Input	-																							
Delay Fuse	15	Std Output	80																							
Max. Fuse	15	Low Fire Output	-																							
Compressor	COPELAND	Gas Valve (HSP)	HW	70	MBh	36.8	38.1	41.8	-	35.9	37.2	40.8	-	35.0	36.3	39.8	-	33.3	34.5	37.8	-	30.8	32.0	35.0	-	
		Regulation	SNAP		S/T	0.74	0.62	0.43	-	0.76	0.64	0.44	-	0.79	0.66	0.46	-	0.82	0.68	0.47	-	0.82	0.69	0.48	-	
		Manifold Press	3.5		AMPS	18.2	18.5	19.0	-	19.4	19.8	20.4	-	20.5	21.0	21.6	-	21.7	22.1	22.7	-	22.7	23.2	23.9	-	
		Std orifice	42		HI PR	186	201	212	-	212	228	241	-	241	260	274	-	272	292	309	-	300	323	341	-	
Cap MFD/V	42	Low Fire Orifice		80	LO PR	65	69	75	-	67	72	78	-	71	75	82	-	74	79	86	-	77	82	89	-	
CC Heater		Pilot Orifice	0.018	75	MBh	37.4	38.5	41.7	44.8	36.5	37.6	40.7	43.7	35.6	36.7	39.7	42.6	33.9	34.9	37.7	40.5	31.4	32.3	35.0	37.5	
Start Kit	NAMA001SC	Temp Rise	35 - 65		S/T	0.85	0.76	0.57	0.37	0.87	0.78	0.59	0.38	0.90	0.80	0.61	0.39	0.93	0.83	0.63	0.40	0.94	0.84	0.63	0.41	
		Ignition Type	HSP		AMPS	18.3	18.7	19.2	19.7	19.6	20.0	20.5	21.2	20.7	21.1	21.7	22.4	21.8	22.3	22.9	23.7	22.9	23.4	24.1	24.9	
		Fan On/Off	TIME		HI PR	188	203	214	223	214	230	243	254	244	263	277	289	274	295	312	325	303	326	345	359	
		Limit Set Max	135		LO PR	66	70	76	81	68	73	79	84	72	76	83	89	75	80	87	93	78	83	90	96	
Motor-HP	1/3	Heat Antic	0.58	80	MBh	38.1	38.9	41.6	44.4	37.2	38.0	40.6	43.4	36.3	37.1	39.6	42.3	34.5	35.2	37.6	40.2	31.9	32.6	34.8	37.3	
FLA	0.75				S/T	0.93	0.87	0.71	0.53	0.95	0.89	0.73	0.54	0.98	0.92	0.75	0.56	1.00	0.96	0.78	0.58	1.00	0.96	0.78	0.59	
LRA	2.15				AMPS	18.4	18.8	19.3	19.9	19.7	20.1	20.7	21.4	20.9	21.3	21.9	22.6	22.0	22.5	23.1	23.9	23.1	23.6	24.3	25.1	
RPM	1140				HI PR	190	205	216	225	216	233	246	256	246	265	280	292	277	298	315	329	306	330	348	363	
Cap MFD/V	5/440				LO PR	66	70	77	82	69	73	80	85	72	77	84	89	76	81	88	94	78	83	91	97	
PTCR					85	MBh	38.8	39.5	41.4	44.1	37.8	38.6	40.4	43.1	36.9	37.6	39.4	42.0	35.1	35.7	37.4	39.9	32.5	33.1	34.7	37.0
						S/T	0.97	0.94	0.85	0.69	1.00	0.96	0.87	0.71	1.00	0.99	0.90	0.73	1.00	1.00	0.93	0.76	1.00	1.00	0.94	0.76
						AMPS	18.6	18.9	19.4	20.1	19.9	20.3	20.9	21.5	21.0	21.5	22.1	22.8	22.2	22.6	23.3	24.1	23.3	23.8	24.5	25.3
						HI PR	192	207	218	228	219	235	248	259	249	268	283	295	280	301	318	332	309	333	352	367
Hi Press					LO PR	67	71	78	83	70	74	81	86	73	78	85	90	77	81	89	95	79	84	92	98	
Low Press					Air Delivery in CFM - Dry Coil - No Filter (Add .05 static for Wet Coil)																					
Operating Chg	(R-22 Oz)				230 Volt	External Static Press (Inch Water Column)																				
(No Lines)*	80				Speed Tap	0.2	0.3	0.4	0.5																	
Service Driers					HI	1770	1740	1710	1670																	
Liquid/Chg	16 Cu In / 11 oz				MD	1385	1365	1355	1340																	
Suction	30 Sq In				LO	1180	1170	1160	1180																	
Unit Weight	420				1098007																					

Technical Labels

Style No: PGF048H080/ GPFM48H080 (LOW HEAT)			Outdoor Ambient Temperature - Degrees F. Dry Bulb																								
			75					85					95					105					115				
			Entering Indoor Temperature - Degrees F. Wet Bulb																								
			59 63 67 71				59 63 67 71				59 63 67 71				59 63 67 71				59 63 67 71								
Voltage	208 / 230		Gas Type	NAT	IDB																						
Phase	3		Std Input	80																							
Ampacity	22.9		Low Fire Input																								
Delay Fuse	15		Std Output	64	MBh	42.4	43.9	48.1	-	41.4	42.9	47.0	-	40.4	41.8	45.8	-	38.3	39.7	43.5	-	35.5	36.8	40.3	-		
			Low Fire Output		S/T	0.78	0.66	0.45	-	0.80	0.67	0.47	-	0.83	0.69	0.48	-	0.86	0.72	0.50	-	0.87	0.73	0.50	-		
Max. Fuse	35		Gas Valve (HSP)	HW	70	AMPS	19.2	19.6	20.1	-	20.5	20.9	21.5	-	21.7	22.1	22.7	-	22.8	23.3	24.0	-	24.0	24.5	25.2	-	
Compressor	COPELAND		Regulation	SNAP	3.5	HI PR	184	198	210	-	210	226	238	-	239	257	271	-	269	289	305	-	297	320	337	-	
			Manifold Press			LO PR	66	71	77	-	69	73	80	-	73	77	84	-	76	81	88	-	79	84	91	-	
LRA	91		Std orifice	45	75	MBh	43.1	44.4	48.0	51.5	42.1	43.3	46.9	50.3	41.0	42.3	45.7	49.1	39.0	40.1	43.4	46.6	36.1	37.2	40.2	43.2	
Cap MFD/V			Low Fire Orifice			S/T	0.89	0.80	0.60	0.39	0.91	0.82	0.62	0.40	0.94	0.84	0.64	0.41	0.98	0.88	0.66	0.43	0.99	0.88	0.67	0.43	
CC Heater			Pilot Orifice	0.1228	80	AMPS	19.3	19.7	20.2	20.9	20.7	21.1	21.7	22.4	21.9	22.3	22.9	23.6	23.0	23.5	24.2	24.9	24.2	24.7	25.4	26.2	
Start Kit	NAMA001SC		Temp Rise	35 - 65		HI PR	186	200	212	221	212	228	241	251	241	260	274	286	271	292	309	322	300	323	341	356	
Cond & Evap	Cond	Evap	Ignition Type	HSP	85	LO PR	67	71	78	83	70	74	81	86	73	78	85	91	77	82	89	95	79	85	92	98	
	Type	Fan	Blower	TIME		MBh	43.9	44.8	47.9	51.2	42.8	43.7	46.7	50.0	41.8	42.7	45.6	48.7	39.7	40.5	43.3	46.3	36.8	37.6	40.1	42.9	
Size	20.3	DD11-9A	Fan On/Off	160	80	S/T	0.98	0.92	0.75	0.56	1.00	0.94	0.77	0.57	1.00	0.97	0.79	0.59	1.00	1.00	0.82	0.61	1.00	1.00	0.83	0.62	
Motor-HP	1/3	1/2	Limit Set Max	0.58		AMPS	19.5	19.9	20.4	21.0	20.8	21.3	21.8	22.5	22.0	22.5	23.1	23.8	23.2	23.7	24.4	25.1	24.4	24.9	25.6	26.4	
Type	PSC	PSC	Heat Antic		85	HI PR	188	203	214	223	214	230	243	254	244	262	277	289	274	295	312	325	303	326	344	359	
FLA	1.9	4.1				LO PR	68	72	79	84	70	75	82	87	74	79	86	92	78	83	90	96	80	85	93	99	
LRA	3.8	7.5			85	MBh	44.6	45.5	47.6	50.8	43.6	44.4	46.5	49.6	42.5	43.3	45.4	48.4	40.4	41.2	43.1	46.0	37.4	38.1	39.9	42.6	
RPM	1140	1000				S/T	1.00	0.99	0.89	0.72	1.00	1.00	0.92	0.74	1.00	1.00	0.94	0.77	1.00	1.00	0.98	0.80	1.00	1.00	0.99	0.80	
Cap MFD/V	5/440	15/370			AMPS	19.6	20.0	20.5	21.2	21.0	21.4	22.0	22.7	22.2	22.6	23.3	24.0	23.4	23.9	24.5	25.3	24.6	25.1	25.8	26.6		
PTCR					85	HI PR	190	205	216	225	216	233	246	256	246	265	280	292	277	298	315	328	306	329	348	363	
	Hi Press					LO PR	69	73	80	85	71	76	83	88	75	80	87	93	78	83	91	97	81	86	94	100	
Low Press					Air Delivery in CFM - Dry Coil - No Filter (Add .05 static for Wet Coil)																						
Operating Chg (No Lines)*	(R-22 Oz)				230 Volt External Static Press (Inch Water Column)																						
	102				Speed Tap																						
Service Driers					HI																						
					1770 1740 1710 1670																						
Liquid/Chg	30 Cu In / 17 oz				MD																						
Suction	30 Sq In				1385 1365 1355 1340																						
Unit Weight	490				LO																						
					1180 1170 1160 1180																						
1098008																											

Style No: PGF048H120 / GPFM48H120 (HIGH HEAT)			Outdoor Ambient Temperature - Degrees F. Dry Bulb																								
			75					85					95					105					115				
			Entering Indoor Temperature - Degrees F. Wet Bulb																								
			59 63 67 71				59 63 67 71				59 63 67 71				59 63 67 71				59 63 67 71								
Voltage	208/230		Gas Type	NAT	IDB																						
Phase	3		Std Input	120																							
Ampacity	22.9		Low Fire Input	-																							
Delay Fuse	15		Std Output	96	MBh	42.4	43.9	48.1	-	41.4	42.9	47.0	-	40.4	41.8	45.8	-	38.3	39.7	43.5	-	35.5	36.8	40.3	-		
			Low Fire Output		S/T	0.78	0.66	0.45	-	0.80	0.67	0.47	-	0.83	0.69	0.48	-	0.86	0.72	0.50	-	0.87	0.73	0.50	-		
Max. Fuse	35		Gas Valve (HSP)	HW	70	AMPS	19.2	19.6	20.1	-	20.5	20.9	21.5	-	21.7	22.1	22.7	-	22.8	23.3	24.0	-	24.0	24.5	25.2	-	
Compressor	COPELAND		Regulation	SNAP	3.5	HI PR	184	198	210	-	210	226	238	-	239	257	271	-	269	289	305	-	297	320	337	-	
			Manifold Press			LO PR	66	71	77	-	69	73	80	-	73	77	84	-	76	81	88	-	79	84	91	-	
LRA	91		Std orifice	42	75	MBh	43.1	44.4	48.0	51.5	42.1	43.3	46.9	50.3	41.0	42.3	45.7	49.1	39.0	40.1	43.4	46.6	36.1	37.2	40.2	43.2	
Cap MFD/V			Low Fire Orifice	-		S/T	0.89	0.80	0.60	0.39	0.91	0.82	0.62	0.40	0.94	0.84	0.64	0.41	0.98	0.88	0.66	0.43	0.99	0.88	0.67	0.43	
CC Heater			Pilot Orifice	0.018	80	AMPS	19.3	19.7	20.2	20.9	20.7	21.1	21.7	22.4	21.9	22.3	22.9	23.6	23.0	23.5	24.2	24.9	24.2	24.7	25.4	26.2	
Start Kit	NAMA001SC		Temp Rise	40-70		HI PR	186	200	212	221	212	228	241	251	241	260	274	286	271	292	309	322	300	323	341	356	
Cond & Evap	Cond	Evap	Ignition Type	HSP	85	LO PR	67	71	78	83	70	74	81	86	73	78	85	91	77	82	89	95	79	85	92	98	
	Type	Fan	Blower	TIME		MBh	43.9	44.8	47.9	51.2	42.8	43.7	46.7	50.0	41.8	42.7	45.6	48.7	39.7	40.5	43.3	46.3	36.8	37.6	40.1	42.9	
Size	20.3	DD11-9A	Fan On/Off	135	80	S/T	0.98	0.92	0.75	0.56	1.00	0.94	0.77	0.57	1.00	0.97	0.79	0.59	1.00	1.00	0.82	0.61	1.00	1.00	0.83	0.62	
Motor-HP	1/3	1/2	Limit Set Max	0.58		AMPS	19.5	19.9	20.4	21.0	20.8	21.3	21.8	22.5	22.0	22.5	23.1	23.8	23.2	23.7	24.4	25.1	24.4	24.9	25.6	26.4	
Type	PSC	PSC	Heat Antic		85	HI PR	188	203	214	223	214	230	243	254	244	262	277	289	274	295	312	325	303	326	344	359	
FLA	1.9	4.1				LO PR	68	72	79	84	70	75	82	87	74	79	86	92	78	83	90	96	80	85	93	99	
LRA	3.8	7.5			85	MBh	44.6	45.5	47.6	50.8	43.6	44.4	46.5	49.6	42.5	43.3	45.4	48.4	40.4	41.2	43.1	46.0	37.4	38.1	39.9	42.6	
RPM	1140	1000				S/T	1.00	0.99	0.89	0.72	1.00	1.00	0.92	0.74	1.00	1.00	0.94	0.77	1.00	1.00	0.98	0.80	1.00	1.00	0.99	0.80	
Cap MFD/V	5/440	15/370			AMPS	19.6	20.0	20.5	21.2	21.0	21.4	22.0	22.7	22.2	22.6	23.3	24.0	23.4	23.9	24.5	25.3	24.6	25.1	25.8	26.6		
PTCR					85	HI PR	190	205	216	225	216	233	246	256	246	265	280	292	277	298	315	328	306	329	348	363	
	Hi Press					LO PR	69	73	80	85	71	76	83	88	75	80	87	93	78	83	91	97	81	86	94	100	
Low Press					Air Delivery in CFM - Dry Coil - No Filter (Add .05 static for Wet Coil)																						
Operating Chg (No Lines)*	(R-22 Oz)				230 Volt External Static Press (Inch Water Column)																						
	102				Speed Tap																						
Service Driers					HI																						
					1810 1790 1780 1700																						
Liquid/Chg	16 Cu In / 11 oz				MD																						
Suction	30 Sq In				1400 1380 1350 1335																						
Unit Weight	420				LO																						
					1230 1210 1190 1100																						
1098009																											

Technical Labels

Style No:		PGF048L080 / GPFM48L080 (LOW HEAT)				Outdoor Ambient Temperature - Degrees F. Dry Bulb																			
		Gas Type		NAT																					
		Std Input		80																					
		Low Fire Input		IDB	75				85				95				105				115				
		Std Output		64	Entering Indoor Temperature - Degrees F. Wet Bulb																				
		Low Fire Output			59	63	67	71	59	63	67	71	59	63	67	71	59	63	67	71	59	63	67	71	
Voltage	460				MBh	42.4	43.9	48.1	-	41.4	42.9	47.0	-	40.4	41.8	45.8	-	38.3	39.7	43.5	-	35.5	36.8	40.3	-
Phase	3				S/T	0.78	0.66	0.45	-	0.80	0.67	0.47	-	0.83	0.69	0.48	-	0.86	0.72	0.50	-	0.87	0.73	0.50	-
Ampacity	10.4				AMPS	19.2	19.6	20.1	-	20.5	20.9	21.5	-	21.7	22.1	22.7	-	22.8	23.3	24.0	-	24.0	24.5	25.2	-
Delay Fuse	15				HI PR	184	198	210	-	210	226	238	-	239	257	271	-	269	289	305	-	297	320	337	-
Max. Fuse	15				LO PR	66	71	77	-	69	73	80	-	73	77	84	-	76	81	88	-	79	84	91	-
Compressor	COPELAND				MBh	43.1	44.4	48.0	51.5	42.1	43.3	46.9	50.3	41.0	42.3	45.7	49.1	39.0	40.1	43.4	46.6	36.1	37.2	40.2	43.2
RLA	6.08				S/T	0.89	0.80	0.60	0.39	0.91	0.82	0.62	0.40	0.94	0.84	0.64	0.41	0.98	0.88	0.66	0.43	0.99	0.88	0.67	0.43
LRA	42				AMPS	19.3	19.7	20.2	20.9	20.7	21.1	21.7	22.4	21.9	22.3	22.9	23.6	23.0	23.5	24.2	24.9	24.2	24.7	25.4	26.2
Cap MFD/V					HI PR	186	200	212	221	212	228	241	251	241	260	274	286	271	292	309	322	300	323	341	356
CC Heater					LO PR	67	71	78	83	70	74	81	86	73	78	85	91	77	82	89	95	79	85	92	98
Start Kit	NAMA001SC				MBh	43.9	44.8	47.9	51.2	42.8	43.7	46.7	50.0	41.8	42.7	45.6	48.7	39.7	40.5	43.3	46.3	36.8	37.6	40.1	42.9
Cond & Evap	Cond	Evap			S/T	0.98	0.92	0.75	0.56	1.00	0.94	0.77	0.57	1.00	0.97	0.79	0.59	1.00	1.00	0.82	0.61	1.00	1.00	0.83	0.62
Type	Fan	Blower			AMPS	19.5	19.9	20.4	21.0	20.8	21.3	21.8	22.5	22.0	22.5	23.1	23.8	23.2	23.7	24.4	25.1	24.4	24.9	25.6	26.4
Size	20.3	DD11-9A			HI PR	188	203	214	223	214	230	243	254	244	262	277	289	274	295	312	325	303	326	344	359
Motor-HP	1/3	1/2			LO PR	68	72	79	84	70	75	82	87	74	79	86	92	78	83	90	96	80	85	93	99
Type	PSC	PSC			MBh	44.6	45.5	47.6	50.8	43.6	44.4	46.5	49.6	42.5	43.3	45.4	48.4	40.4	41.2	43.1	46.0	37.4	38.1	39.9	42.6
FLA	0.75	2			S/T	1.00	0.99	0.89	0.72	1.00	1.00	0.92	0.74	1.00	1.00	0.94	0.77	1.00	1.00	0.98	0.80	1.00	1.00	0.99	0.80
LRA	2.15	4.5			AMPS	19.6	20.0	20.5	21.2	21.0	21.4	22.0	22.7	22.2	22.6	23.3	24.0	23.4	23.9	24.5	25.3	24.6	25.1	25.8	26.6
RPM	1140	1000			HI PR	190	205	216	225	216	233	246	256	246	265	280	292	277	298	315	328	306	329	348	363
Cap MFD/V	5/440	15/370			LO PR	69	73	80	85	71	76	83	88	75	80	87	93	78	83	91	97	81	86	94	100
PTCR					Air Delivery in CFM - Dry Coil - No Filter (Add .05 static for Wet Coil)																				
Hi Press					230 Volt External Static Press (Inch Water Column)																				
Low Press					Speed Tap																				
Operating Chg	(R-22 Oz)				HI 1770 1740 1710 1670																				
(No Lines)*	102				MD 1385 1365 1355 1340																				
Service Driers					LO 1180 1170 1160 1180																				
Liquid/Chg	30 Cu In / 17 oz																								
Suction	30 Sq In																								
Unit Weight	490																								

1098010

Style No:		PGF048L120 / GPFM48L120 (HIGH HEAT)				Outdoor Ambient Temperature - Degrees F. Dry Bulb																			
		Gas Type		NAT																					
		Std Input		120																					
		Low Fire Input		-																					
		Std Output		96	Entering Indoor Temperature - Degrees F. Wet Bulb																				
		Low Fire Output		-	59	63	67	71	59	63	67	71	59	63	67	71	59	63	67	71	59	63	67	71	
Voltage	460				MBh	42.4	43.9	48.1	-	41.4	42.9	47.0	-	40.4	41.8	45.8	-	38.3	39.7	43.5	-	35.5	36.8	40.3	-
Phase	3				S/T	0.78	0.66	0.45	-	0.80	0.67	0.47	-	0.83	0.69	0.48	-	0.86	0.72	0.50	-	0.87	0.73	0.50	-
Ampacity	10.4				AMPS	19.2	19.6	20.1	-	20.5	20.9	21.5	-	21.7	22.1	22.7	-	22.8	23.3	24.0	-	24.0	24.5	25.2	-
Delay Fuse	15				HI PR	184	198	210	-	210	226	238	-	239	257	271	-	269	289	305	-	297	320	337	-
Max. Fuse	15				LO PR	66	71	77	-	69	73	80	-	73	77	84	-	76	81	88	-	79	84	91	-
Compressor	COPELAND				MBh	43.1	44.4	48.0	51.5	42.1	43.3	46.9	50.3	41.0	42.3	45.7	49.1	39.0	40.1	43.4	46.6	36.1	37.2	40.2	43.2
RLA	6.08				S/T	0.89	0.80	0.60	0.39	0.91	0.82	0.62	0.40	0.94	0.84	0.64	0.41	0.98	0.88	0.66	0.43	0.99	0.88	0.67	0.43
LRA	42				AMPS	19.3	19.7	20.2	20.9	20.7	21.1	21.7	22.4	21.9	22.3	22.9	23.6	23.0	23.5	24.2	24.9	24.2	24.7	25.4	26.2
Cap MFD/V					HI PR	186	200	212	221	212	228	241	251	241	260	274	286	271	292	309	322	300	323	341	356
CC Heater					LO PR	67	71	78	83	70	74	81	86	73	78	85	91	77	82	89	95	79	85	92	98
Start Kit	NAMA001SC				MBh	43.9	44.8	47.9	51.2	42.8	43.7	46.7	50.0	41.8	42.7	45.6	48.7	39.7	40.5	43.3	46.3	36.8	37.6	40.1	42.9
Cond & Evap	Cond	Evap			S/T	0.98	0.92	0.75	0.56	1.00	0.94	0.77	0.57	1.00	0.97	0.79	0.59	1.00	1.00	0.82	0.61	1.00	1.00	0.83	0.62
Type	Fan	Blower			AMPS	19.5	19.9	20.4	21.0	20.8	21.3	21.8	22.5	22.0	22.5	23.1	23.8	23.2	23.7	24.4	25.1	24.4	24.9	25.6	26.4
Size	20.3	DD11-9A			HI PR	188	203	214	223	214	230	243	254	244	262	277	289	274	295	312	325	303	326	344	359
Motor-HP	1/3	1/2			LO PR	68	72	79	84	70	75	82	87	74	79	86	92	78	83	90	96	80	85	93	99
Type	PSC	PSC			MBh	44.6	45.5	47.6	50.8	43.6	44.4	46.5	49.6	42.5	43.3	45.4	48.4	40.4	41.2	43.1	46.0	37.4	38.1	39.9	42.6
FLA	0.75	2			S/T	1.00	0.99	0.89	0.72	1.00	1.00	0.92	0.74	1.00	1.00	0.94	0.77	1.00	1.00	0.98	0.80	1.00	1.00	0.99	0.80
LRA	2.15	4.5			AMPS	19.6	20.0	20.5	21.2	21.0	21.4	22.0	22.7	22.2	22.6	23.3	24.0	23.4	23.9	24.5	25.3	24.6	25.1	25.8	26.6
RPM	1140	1000			HI PR	190	205	216	225	216	233	246	256	246	265	280	292	277	298	315	328	306	329	348	363
Cap MFD/V	5/440	15/370			LO PR	69	73	80	85	71	76	83	88	75	80	87	93	78	83	91	97	81	86	94	100
PTCR					Air Delivery in CFM - Dry Coil - No Filter (Add .05 static for Wet Coil)																				
Hi Press					230 Volt External Static Press (Inch Water Column)																				
Low Press					Speed Tap																				
Operating Chg	(R-22 Oz)				HI 1810 1790 1780 1700																				
(No Lines)*	102				MD 1400 1380 1350 1335																				
Service Driers					LO 1230 1210 1190 1100																				
Liquid/Chg	30 Cu In / 17 oz																								
Suction	30 Sq In																								
Unit Weight	490																								

1098011

Technical Labels

Style No:		PGF060H100/ GPFM60H100 (LOW HEAT)		Outdoor Ambient Temperature - Degrees F. Dry Bulb																					
		Gas Type		NAT		75				85				95				105				115			
		Std Input		100		Entering Indoor Temperature - Degrees F. Wet Bulb																			
		Low Fire Input		-		59 63 67 71				59 63 67 71				59 63 67 71				59 63 67 71				59 63 67 71			
		Std Output		80		MBh		54.5 56.4 61.8 -		53.2 55.1 60.4 -		51.9 53.8 58.9 -		49.3 51.1 55.9 -		45.6 47.3 51.8 -		-		-		-			
		Low Fire Output		-		S/T		0.74 0.62 0.43 -		0.76 0.64 0.44 -		0.79 0.66 0.46 -		0.82 0.68 0.47 -		0.82 0.69 0.48 -		-		-		-			
		Gas Valve (HSP)		HW		70		AMPS		27.3 27.8 28.6 -		29.3 29.9 30.7 -		31.0 31.7 32.6 -		32.7 33.4 34.4 -		34.4 35.2 36.2 -		-		-			
		Regulation		SNAP		-		HI PR		194 208 220 -		220 237 250 -		251 270 285 -		282 304 321 -		312 336 354 -		-		-			
		Manifold Press		3.5		-		LO PR		64 68 75 -		67 71 77 -		70 75 81 -		73 78 85 -		76 81 88 -		-		-			
		Std orifice		42		-		MBh		55.4 57.0 61.7 66.2		54.1 55.7 60.2 64.7		52.7 54.3 58.8 63.1		50.1 51.6 55.8 59.9		46.4 47.8 51.7 55.5		-		-			
		Low Fire Orifice		-		-		S/T		0.85 0.76 0.57 0.37		0.87 0.78 0.59 0.38		0.90 0.80 0.61 0.39		0.93 0.83 0.63 0.40		0.94 0.84 0.63 0.41		-		-			
		Pilot Orifice		0.018		75		AMPS		27.5 28.1 28.8 29.8		29.5 30.1 31.0 32.0		31.2 31.9 32.8 33.9		33.0 33.7 34.7 35.8		34.7 35.5 36.5 37.7		-		-			
		Temp Rise		50-60		-		HI PR		196 211 222 232		223 240 253 264		254 273 288 300		285 307 324 338		315 339 358 373		-		-			
		Ignition Type		HSP		-		LO PR		65 69 75 80		67 72 78 83		71 75 82 88		74 79 86 92		77 82 89 95		-		-			
		Fan On/Off		TIME		-		MBh		56.4 57.6 61.5 65.8		55.0 56.2 60.1 64.2		53.7 54.8 58.6 62.6		51.0 52.1 55.7 59.5		47.2 48.3 51.6 55.1		-		-			
		Limit Set Max		135		-		S/T		0.93 0.87 0.71 0.53		0.95 0.89 0.73 0.54		0.98 0.92 0.75 0.56		1.00 0.96 0.78 0.58		1.00 0.96 0.78 0.59		-		-			
		Heat Antic		0.58		80		AMPS		27.7 28.3 29.1 30.0		29.7 30.4 31.2 32.2		31.5 32.2 33.1 34.2		33.3 34.0 35.0 36.1		35.0 35.7 36.8 38.1		-		-			
						-		HI PR		198 213 225 234		225 242 255 266		256 276 291 304		288 310 327 341		318 343 362 377		-		-			
						-		LO PR		65 70 76 81		68 72 79 84		71 76 83 88		75 80 87 93		77 82 90 96		-		-			
						85		MBh		57.3 58.5 61.2 65.3		56.0 57.1 59.8 63.8		54.6 55.7 58.3 62.2		51.9 52.9 55.4 59.1		48.1 49.0 51.3 54.7		-		-			
						-		S/T		0.97 0.94 0.85 0.69		1.00 0.96 0.87 0.71		1.00 0.99 0.90 0.73		1.00 1.00 0.93 0.76		1.00 1.00 0.94 0.76		-		-			
						-		AMPS		27.9 28.5 29.3 30.2		30.0 30.6 31.5 32.5		31.7 32.4 33.4 34.5		33.5 34.2 35.3 36.4		35.3 36.0 37.1 38.4		-		-			
						-		HI PR		200 215 227 237		227 244 258 269		259 278 294 307		291 313 331 345		321 346 365 381		-		-			
						-		LO PR		66 70 77 82		69 73 80 85		72 77 84 89		76 80 88 94		78 83 91 97		-		-			
								Air Delivery in CFM - Dry Coil - No Filter (Add .05 static for Wet Coil)																	
								230 Volt		External Static Press (Inch Water Column)															
								Speed Tap		0.2 0.3 0.4 0.5															
								HI		2050 2000 1990 1980															
								MD HI		1960 1900 1880 1800															
								MD		1920 1840 1790 1720															
								LO		1820 1760 1700 1620															
										1114040															

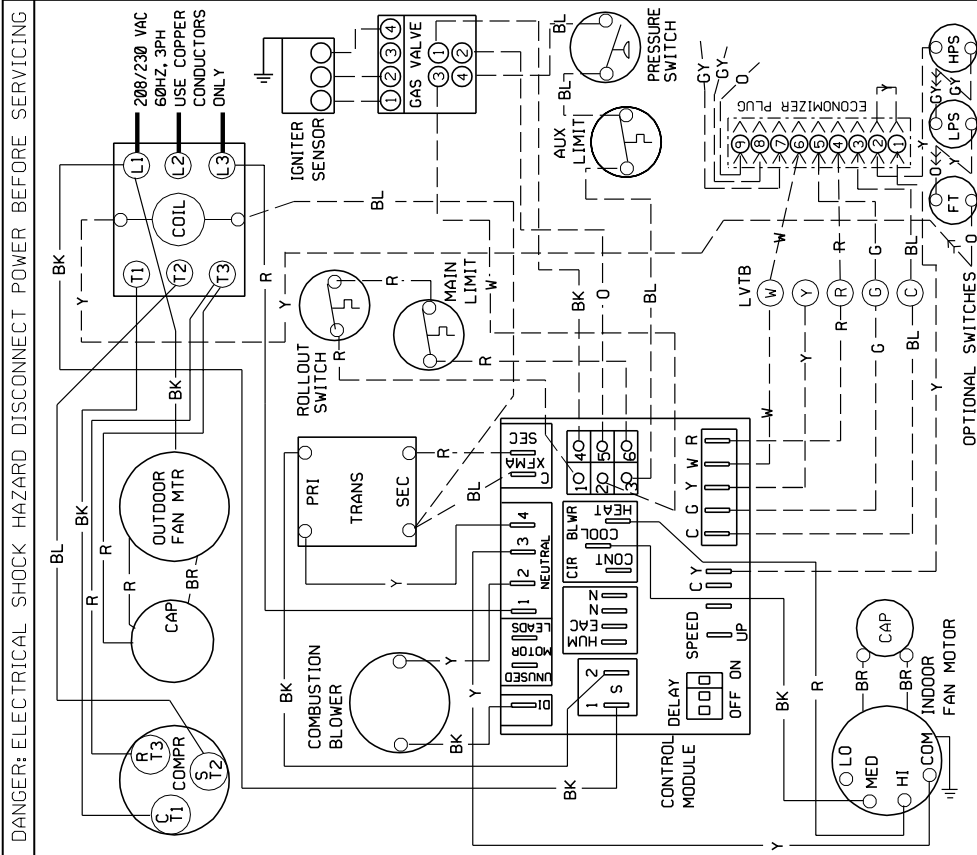
Style No:		PGF060H140 / GPFM60H140 (HIGH HEAT)		Outdoor Ambient Temperature - Degrees F. Dry Bulb																					
		Gas Type		NAT		75				85				95				105				115			
		Std Input		140		Entering Indoor Temperature - Degrees F. Wet Bulb																			
		Low Fire Input		-		59 63 67 71				59 63 67 71				59 63 67 71				59 63 67 71				59 63 67 71			
		Std Output		112		MBh		54.5 56.4 61.8 -		53.2 55.1 60.4 -		51.9 53.8 58.9 -		49.3 51.1 55.9 -		45.6 47.3 51.8 -		-		-		-			
		Low Fire Output		-		S/T		0.74 0.62 0.43 -		0.76 0.64 0.44 -		0.79 0.66 0.46 -		0.82 0.68 0.47 -		0.82 0.69 0.48 -		-		-		-			
		Gas Valve (HSP)		HW		70		AMPS		27.3 27.8 28.6 -		29.3 29.9 30.7 -		31.0 31.7 32.6 -		32.7 33.4 34.4 -		34.4 35.2 36.2 -		-		-			
		Regulation		SNAP		-		HI PR		194 208 220 -		220 237 250 -		251 270 285 -		282 304 321 -		312 336 354 -		-		-			
		Manifold Press		3.5		-		LO PR		64 68 75 -		67 71 77 -		70 75 81 -		73 78 85 -		76 81 88 -		-		-			
		Std orifice		42		-		MBh		55.4 57.0 61.7 66.2		54.1 55.7 60.2 64.7		52.7 54.3 58.8 63.1		50.1 51.6 55.8 59.9		46.4 47.8 51.7 55.5		-		-			
		Low Fire Orifice		-		-		S/T		0.85 0.76 0.57 0.37		0.87 0.78 0.59 0.38		0.90 0.80 0.61 0.39		0.93 0.83 0.63 0.40		0.94 0.84 0.63 0.41		-		-			
		Pilot Orifice		0.018		75		AMPS		27.5 28.1 28.8 29.8		29.5 30.1 31.0 32.0		31.2 31.9 32.8 33.9		33.0 33.7 34.7 35.8		34.7 35.5 36.5 37.7		-		-			
		Temp Rise		40-70		-		HI PR		196 211 222 232		223 240 253 264		254 273 288 300		285 307 324 338		315 339 358 373		-		-			
		Ignition Type		HSP		-		LO PR		65 69 75 80		67 72 78 83		71 75 82 88		74 79 86 92		77 82 89 95		-		-			
		Fan On/Off		TIME		-		MBh		56.4 57.6 61.5 65.8		55.0 56.2 60.1 64.2		53.7 54.8 58.6 62.6		51.0 52.1 55.7 59.5		47.2 48.3 51.6 55.1		-		-			
		Limit Set Max		135		-		S/T		0.93 0.87 0.71 0.53		0.95 0.89 0.73 0.54		0.98 0.92 0.75 0.56		1.00 0.96 0.78 0.58		1.00 0.96 0.78 0.59		-		-			
		Heat Antic		0.58		80		AMPS		27.7 28.3 29.1 30.0		29.7 30.4 31.2 32.2		31.5 32.2 33.1 34.2		33.3 34.0 35.0 36.1		35.0 35.7 36.8 38.1		-		-			
						-		HI PR		198 213 225 234		225 242 255 266		256 276 291 304		288 310 327 341		318 343 362 377		-		-			
						-		LO PR		65 70 76 81		68 72 79 84		71 76 83 88		75 80 87 93		77 82 90 96		-		-			
						85		MBh		57.3 58.5 61.2 65.3		56.0 57.1 59.8 63.8		54.6 55.7 58.3 62.2		51.9 52.9 55.4 59.1		48.1 49.0 51.3 54.7		-		-			
						-		S/T		0.97 0.94 0.85 0.69		1.00 0.96 0.87 0.71		1.00 0.99 0.90 0.73		1.00 1.00 0.93 0.76		1.00 1.00 0.94 0.76		-		-			
						-		AMPS		27.9 28.5 29.3 30.2		30.0 30.6 31.5 32.5		31.7 32.4 33.4 34.5		33.5 34.2 35.3 36.4		35.3 36.0 37.1 38.4		-		-			
						-		HI PR		200 215 227 237		227 244 258 269		259 278 294 307		291 313 331 345		321 346 365 381		-		-			
						-		LO PR		66 70 77 82		69 73 80 85		72 77 84 89		76 80 88 94		78 83 91 97		-		-			
								Air Delivery in CFM - Dry Coil - No Filter (Add .05 static for Wet Coil)																	
								230 Volt		External Static Press (Inch Water Column)															
								Speed Tap		0.2 0.3 0.4 0.5															
								HI		2050 2000 1990 1980															
								MD HI		1960 1900 1880 1800															
								MD		1920 1840 1790 1720															
								LO		1820 1760 1700 1620															
										1114041															

Technical Labels

Style No:	PGF060S140 / GPFM60S140 (High Heat)			Outdoor Ambient Temperature - Degrees F. Dry Bulb																				
Voltage	575		Gas Type	NAT	75				85				95				105				115			
Phase	3		Std Input	140	Entering Indoor Temperature - Degrees F. Wet Bulb																			
Ampacity	11.9		Low Fire Input	-	59				63				67				71							
Delay Fuse	10		Std Output	112	59				63				67				71							
Max. Fuse	15		Low Fire Output	-	59				63				67				71							
Compressor	SCROLL		Gas Valve (HSP)	HW	70				75				80				85							
RLA	7.1		Regulation	SNAP	70				75				80				85							
LRA	49.4		Manifold Press	3.5	70				75				80				85							
Cap MFD/V	-		Std orifice	42	70				75				80				85							
CC Heater	-		Low Fire Orifice	-	70				75				80				85							
Start Kit	NAMA001SC		Pilot Orifice	0.018	75				80				85				90							
Cond & Evap	Cond	Evap	Temp Rise	40-70	75				80				85				90							
Type	Fan	Blower	Ignition Type	HSP	75				80				85				90							
Size	20.3	DD12-12	Fan On/Off	TIME	75				80				85				90							
Motor-HP	1/3	1	Limit Set Max	135	75				80				85				90							
Type	PSC	PSC	Heat Antic	0.58	75				80				85				90							
FLA	.6	6			75				80				85				90							
LRA	2.15	15			75				80				85				90							
RPM	1140	1000			75				80				85				90							
Cap MFD/V	5/370	20/370			75				80				85				90							
PTCR					75				80				85				90							
Hi Press					75				80				85				90							
Low Press					75				80				85				90							
Operating Chg	(R-22 Oz)				75				80				85				90							
(No Lines)*	136				75				80				85				90							
Service Driers					75				80				85				90							
Liquid/Chg	30 Cu In / 17 oz				75				80				85				90							
Suction	30 Sq In				75				80				85				90							
Unit Weight	510				75				80				85				90							
					Air Delivery in CFM - Dry Coil - No Filter (Add .05 static for Wet Coil)																			
					230 Volt				External Static Press (Inch Water Column)															
					Speed Tap				0.2				0.3				0.4				0.5			
					HI				2050				2000				1990				1980			
					MD HI				1960				1900				1880				1800			
					MD				1920				1840				1790				1720			
					LO				1820				1760				1700				1620			
																1114044								

208/230 VOLT - ALL MODELS

CONNECTION WIRING DIAGRAM



IF ANY OF THE ORIGINAL WIRE AS SUPPLIED WITH THE APPLIANCE MUST BE REPLACED, IT MUST BE REPLACED WITH TYPE AWG-10/5 C OR ITS EQUIVALENT.

SEE INSTALLATION INSTRUCTIONS FOR PROPER HEATING AND COOLING CONNECTIONS FOR YOUR UNIT

• SEE INSTALLATION INSTRUCTIONS FOR PROPER HEATING AND COOLING CONNECTIONS FOR YOUR UNIT

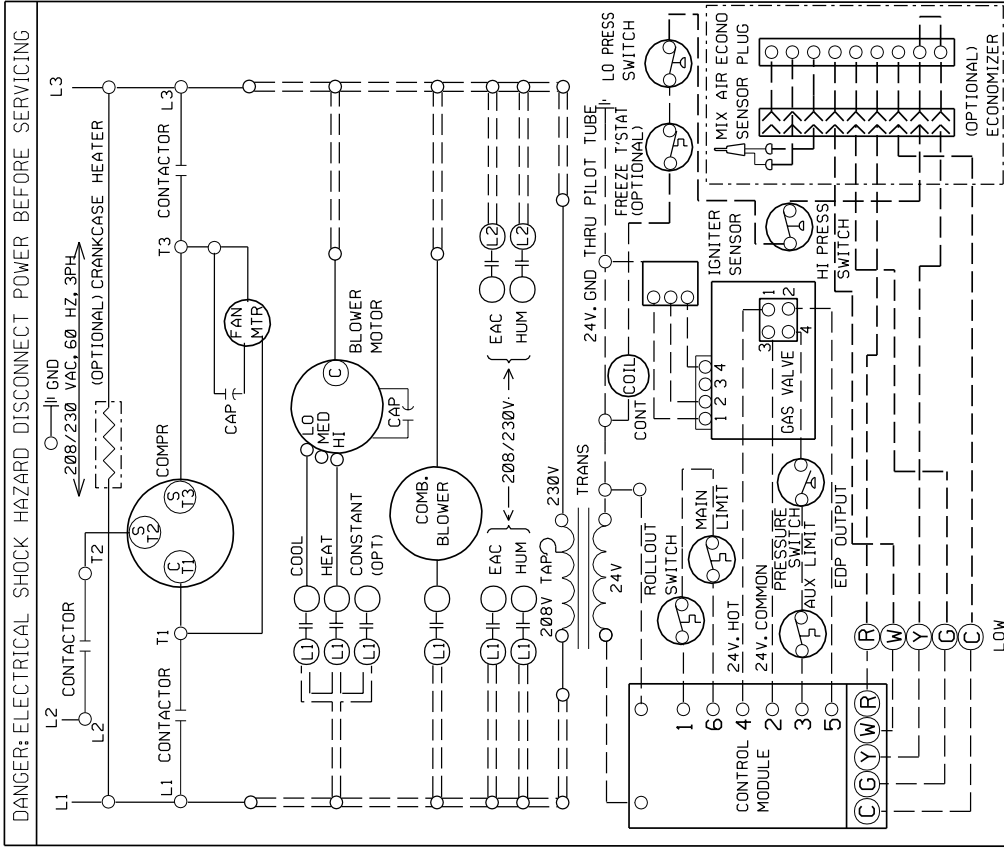
LINE VOLTAGE FACTORY --- LOW VOLTAGE FACTORY --- INTERNAL CIRCUIT BOARD WIRING

LINE VOLTAGE FIELD --- LOW VOLTAGE FIELD

COLOR CODE: GREEN G, ORANGE O, BLACK BK, BLUE BL, BROWN BR, RED R, GRAY GY, VIOLET V, WHITE W, YELLOW Y

10*98016-A

LADDER WIRING DIAGRAM



10*98017

460 VOLT - ALL MODELS

